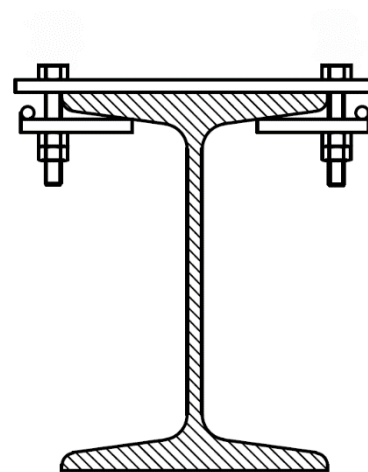
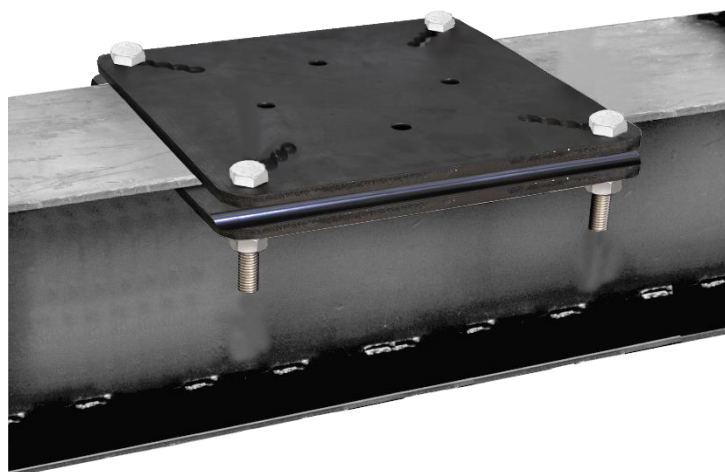
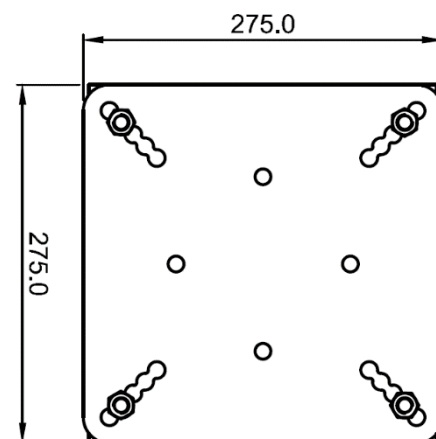
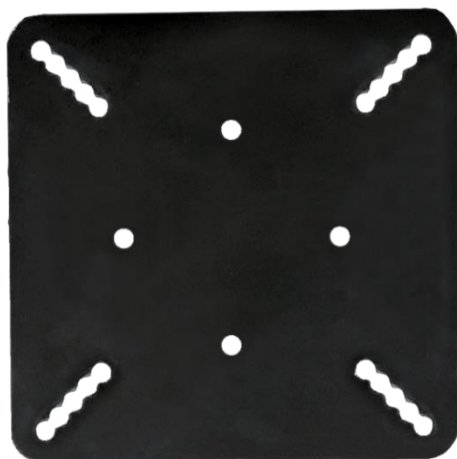

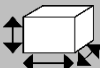



# KS LINE

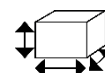


HS CODE
73160000
CARTON SIZE / PCS.
40 x 30 x 15 cm / 1
Technical report SPC0237529/1533/2 Issue 2 (against EN795:2012 Type A)
<b>Satra Technology Centre Ltd, n°0321</b> Wyndham Way, Telford Way, Kettering, Northamptonshire, NN16 8SD - United Kingdom

REF.	FA 60 208 00
CE	EN 795:2012 Type A
MAT.	
DIM.	275x275 mm
	4x M12 x 60 mm 2x CSK M12 x 45 mm 1x CSK M12 x 30 mm
R (kN) / MBS (kN)	12 kN / 26 kN
	10.0 KG



**Nombre d'utilisateurs**  
Number of users  
**Cantidad de usuarios**  
Quantità di utilizzatori  
**Anzahl der Benutzer**



**Fixations à utiliser**  
Fasteners to use  
**Fijaciones que deben usarse**  
Elementi di fissaggio da utilizzare  
**Zu verwendende Befestigungen**

**R (kN) / MBS (kN)**

**Résistance statique (en kN) / Résistance à la rupture**  
Static strength / Minimum Breaking Strength  
**Resistencia estática (en kN) / Resistencia a la ruptura (en kN)**  
Resistenza statica (in kN) / Resistenza alla rottura (in kN)  
**Statische Festigkeit (in kN) / Bruchfestigkeit (in kN)**