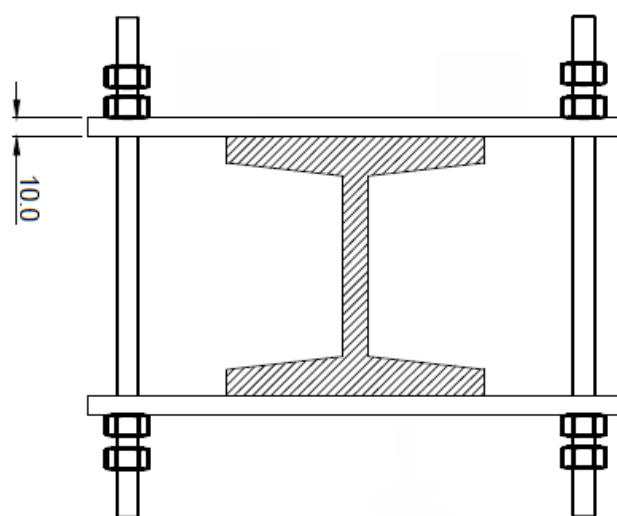
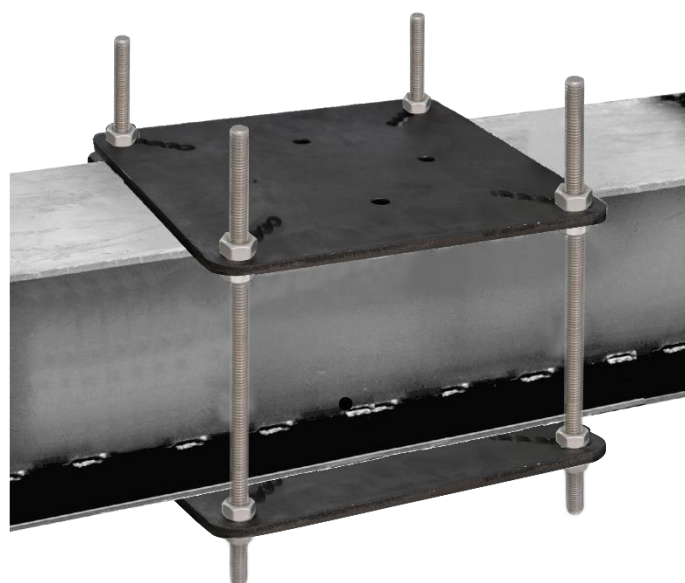
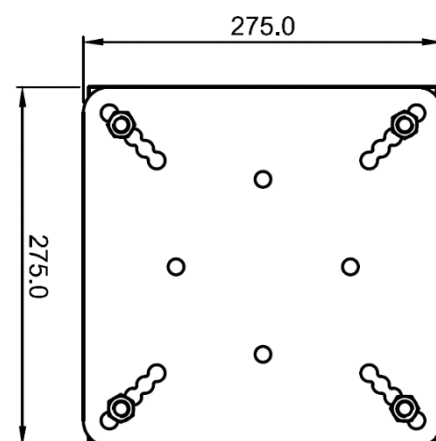
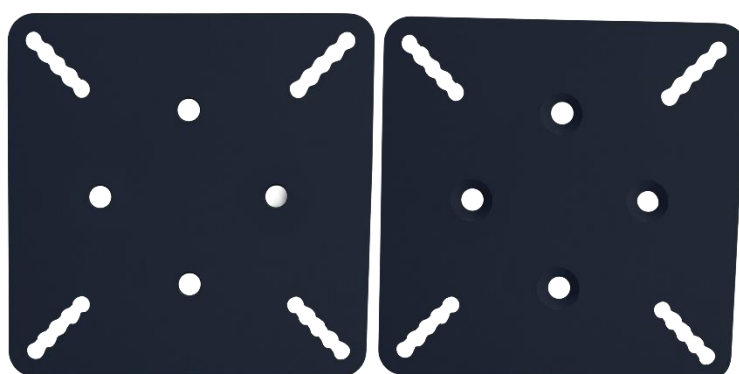

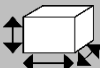



IS LINE

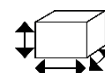


HS CODE
73160000
CARTON SIZE / PCS.
40 x 30 x 15 cm / 1
Technical report SPC0237529/1533/1 (against EN795:2012 Type A)
Satra Technology Centre Ltd, n°0321 Wyndham Way, Telford Way, Kettering, Northamptonshire, NN16 8SD - United Kingdom

REF.	FA 60 207 00
CE	EN 795:2012 Type A
MAT.	
DIM.	275x275 mm
	4x M12 x 350 mm 2x CSK M12 x 45 mm 1x CSK M12 x 30 mm
R (kN) / MBS (kN)	12 kN / 26 kN
	12.5 KG



Nombre d'utilisateurs
Number of users
Cantidad de usuarios
Quantità di utilizzatori
Anzahl der Benutzer



Fixations à utiliser
Fasteners to use
Fijaciones que deben usarse
Elementi di fissaggio da utilizzare
Zu verwendende Befestigungen

R (kN) / MBS (kN)

Résistance statique (en kN) / Résistance à la rupture
Static strength / Minimum Breaking Strength
Resistencia estática (en kN) / Resistencia a la ruptura (en kN)
Resistenza statica (in kN) / Resistenza alla rottura (in kN)
Statische Festigkeit (in kN) / Bruchfestigkeit (in kN)